

SSK Stainless Steel POP Rivet

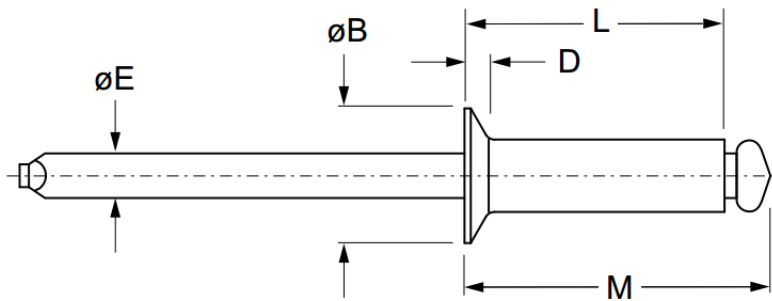
Countersunk head · Stainless steel body · Stainless steel stem
3.2 mm (1/8") - 4.8 mm (3/16")

Features

- Non-structural blind breakstem rivet designed for a wide range of applications
- Cost effective standard rivet
- Installs quickly and easily
- Design of the stem head ensures positive retention after installation

Material

- Body: Stainless steel, natural
- Stem: Stainless steel, natural



Part No.	Size Ø	Grip Range		Hole Size		L	M	ØB	D	ØE	Shear (typical)	Tension (typical)
		nom.	min.	max.	min.	max.	ref.	ref.	max.	max.	ref.	kN
SSK42SSBS	3.2 (1/8")	1.6	3.2	3.28	3.38	6.4	9.4	6.0	1.3	1.9	2.45	3.12
SSK43SSBS		3.2	4.8			8.0	11.0					
SSK44SSBS		4.8	6.4			9.5	12.6					
SSK64SSBS	4.8 (3/16")	3.2	6.4	4.88	4.98	10.8	14.9	9.3	1.8	2.9	4.45	6.12
SSK68SSBS		9.5	12.7			17.2	21.2					



Can't find what you are looking for?

We can provide customized finishing and colouring.
Contact your nearest [Gripwell](http://www.gripwell.com) team for assistance!